



Doctoral training in France

Hélène Roux-de Balmann
Senior scientist, CNRS

Université Fédérale Toulouse Midi-Pyrénées





Outline

1. PhD in France
2. Doctoral schools
3. University of Toulouse
4. The “*École des Docteurs*” Project





French Position

■ Research in France (supported by the French government) is particularly dynamic (2013):

- Research & Development expenditures: 47,5 billion €
- 259 000 researchers
- 6th in the world (number of scientific publications)
- 4th in the world (number of patents)



■ International awards for French researchers:

- 55 French Nobel laureates
- 11 winners of the Fields Medal of 52
- 2nd in the world for its performance in Mathematics



PhD Key figures in France

60 000

• PhD Students

42%

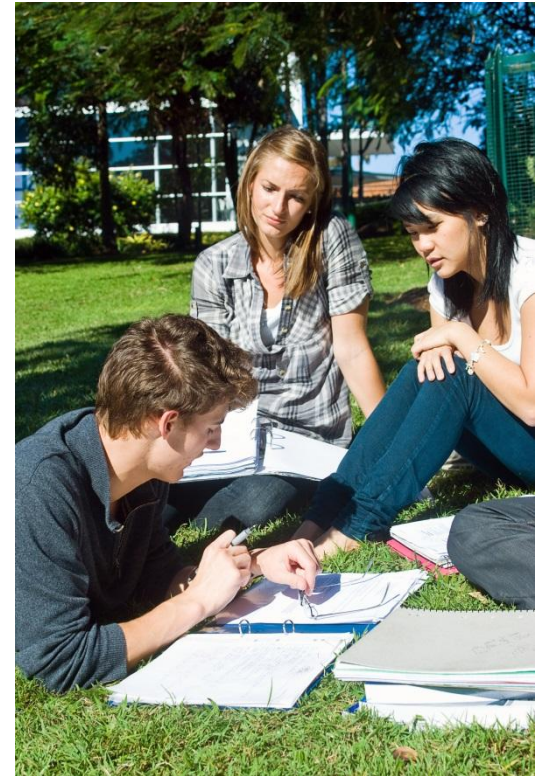
• International PhD Students

300

• Doctoral Schools

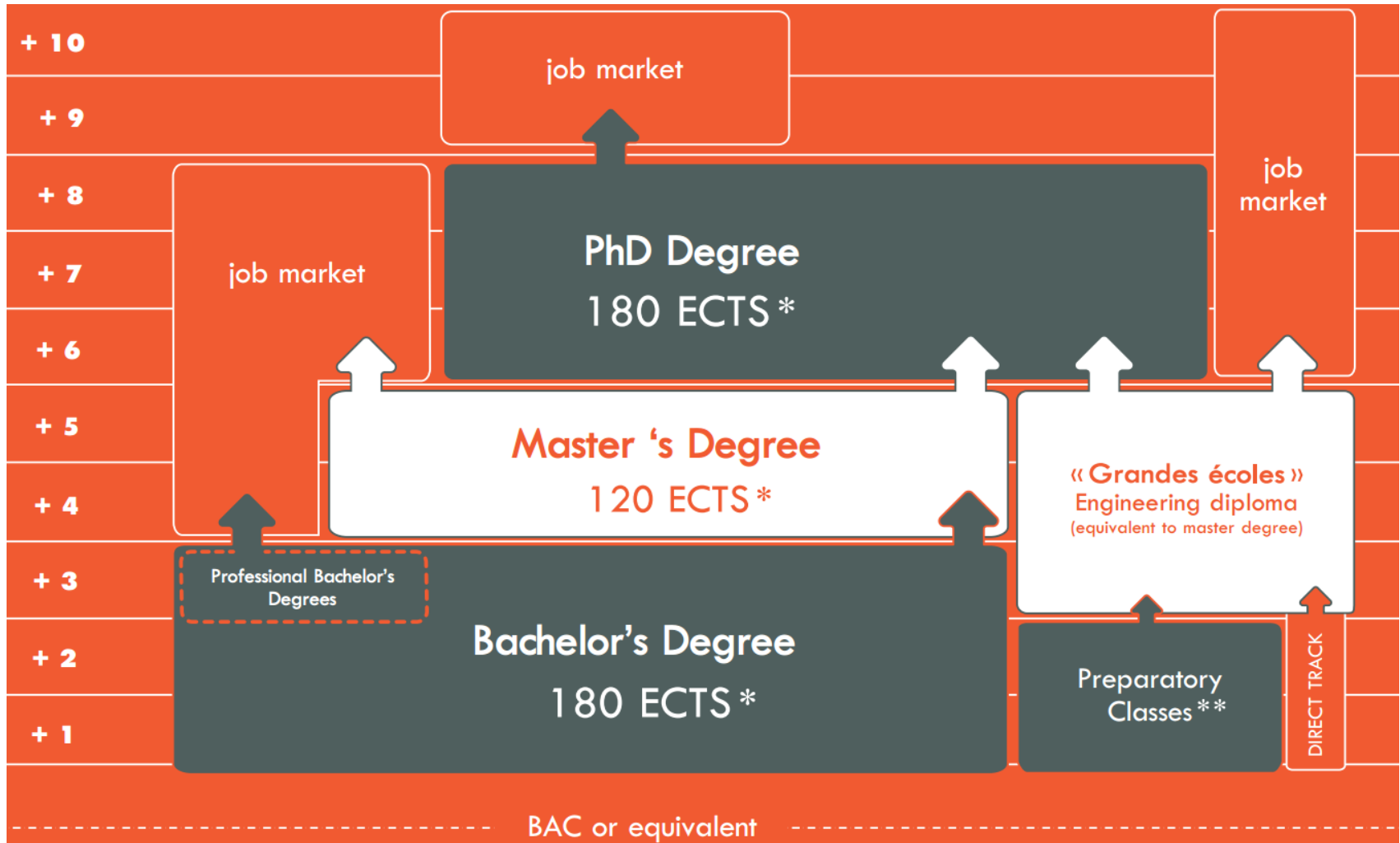
10 000

• PhD degrees delivered every year





Studies in France: LMD system





What is a PhD in France?

■ A Scientific work:

- **A full time research**
- Within a research center
- Under the supervision of a qualified researcher / professor



■ A training program:

- A scientific training
- A non-disciplinary training



■ Average duration: 3-4 years



What is a PhD?

To get the PhD degree

- Satisfy the conditions fixed by the PhD program
 - Publication, seminars, training program...
- A peer reviewed thesis dissertation
- An oral defense

Most of the time can be done in English



Enrolment for a PhD

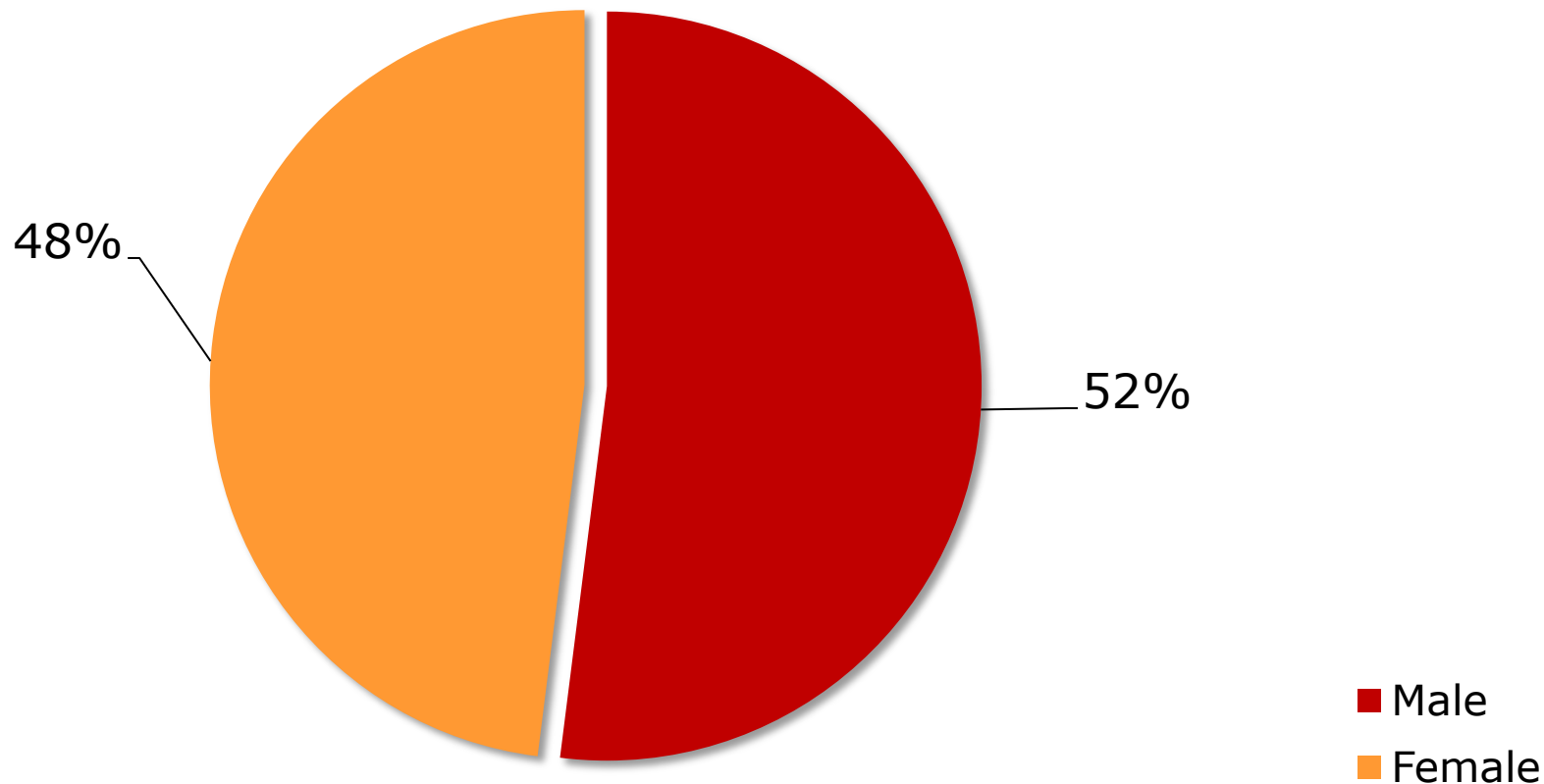
- Access for a PhD is a selective process- candidates shall
 - Hold a degree equivalent to a Bologna complying Master (300 ECTS) with a research experience
 - Have a funding for at least 3 years (1 000€ / month minimum) except for human and social sciences
 - Have a minimum level of english or french

- The selection process involves the supervisor and PhD school (each school having its own recruitment / selection policy)



PhD Students in France

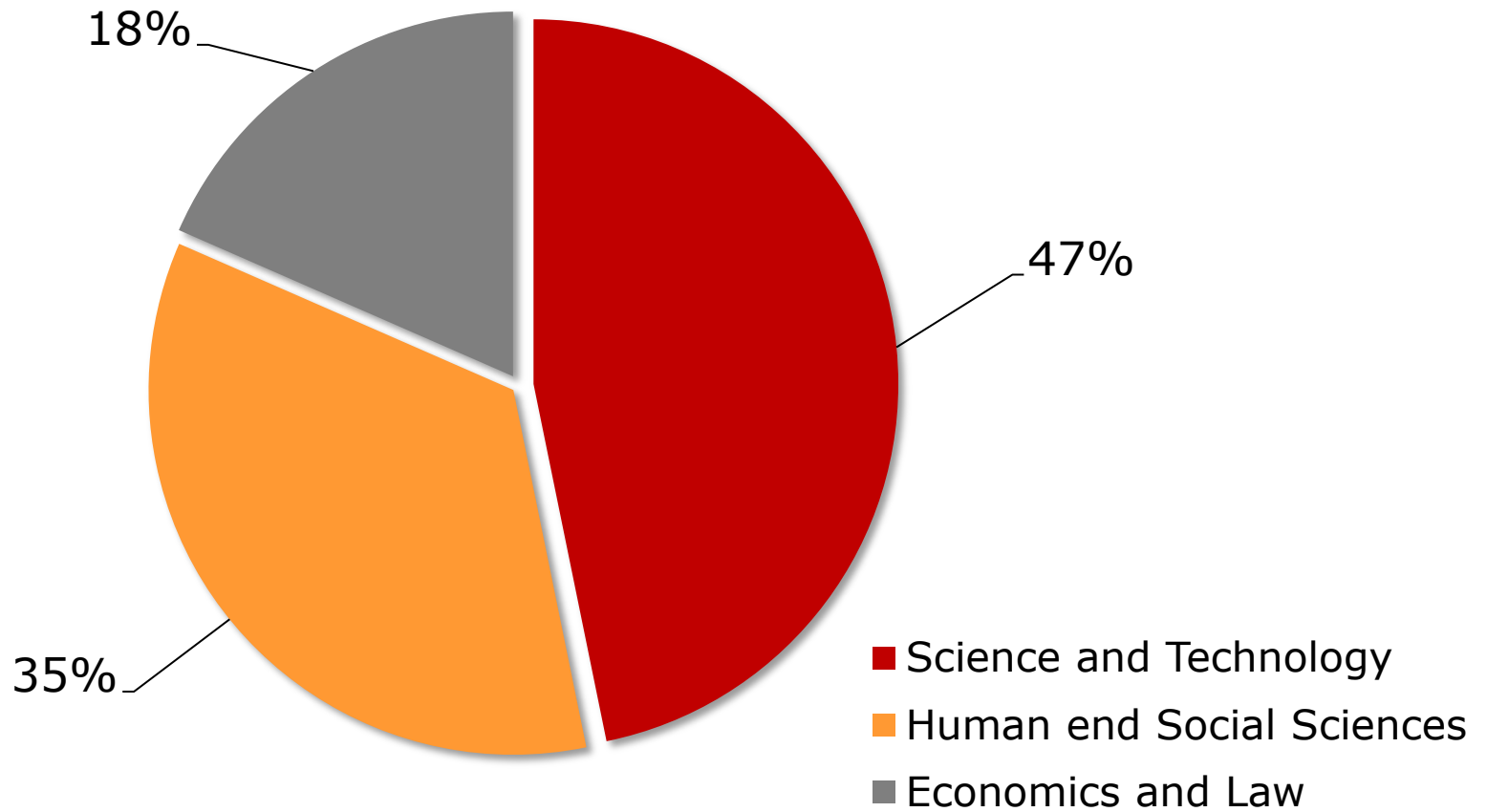
59,229 PhD Students





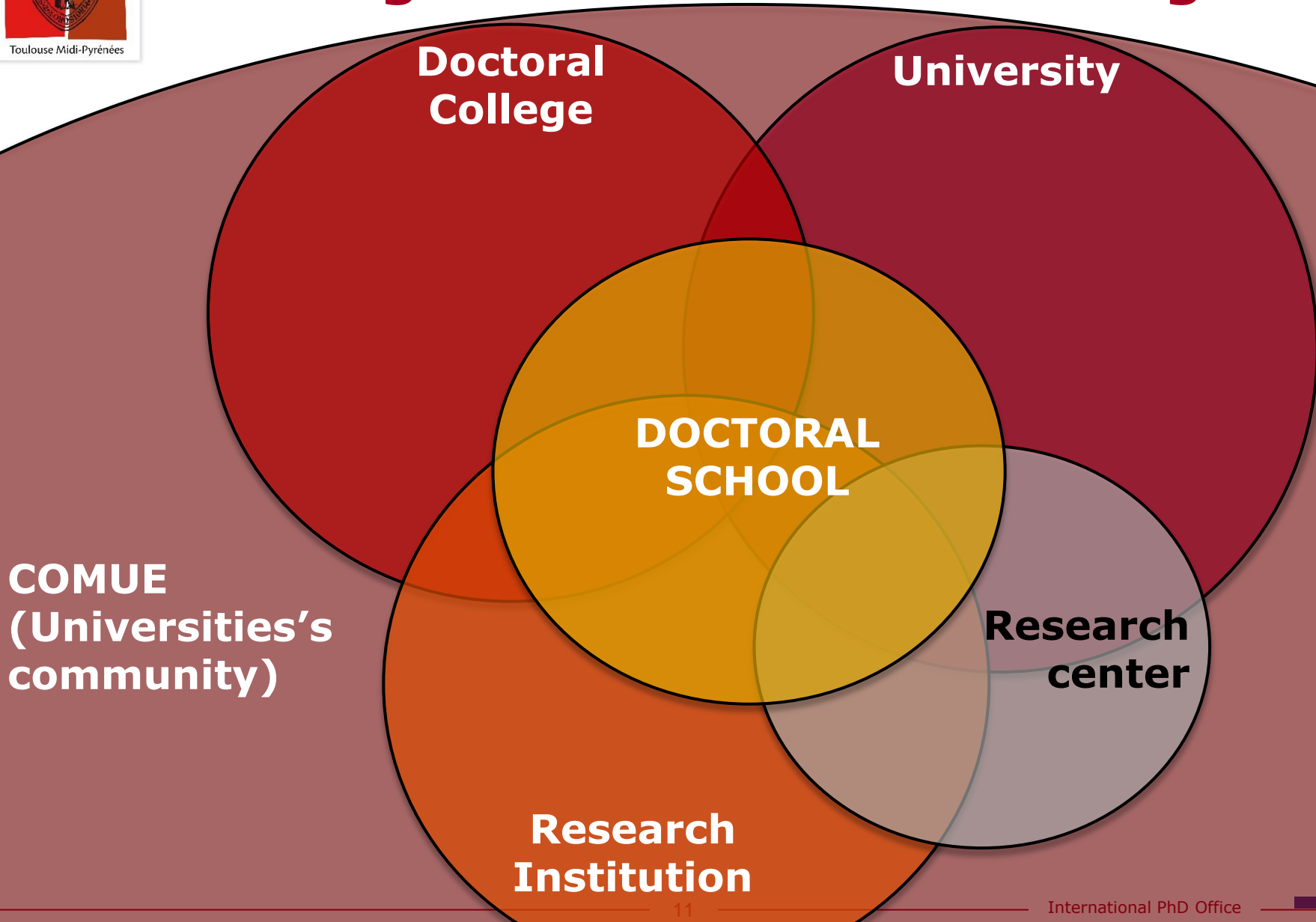
PhD Students in France

59,229 PhD Students





Organisation of PhD training





The duty of the Doctoral Schools

Decree n° 2002-481, April 8, 2002

- Follow up of the Scientific Project
 - Thesis Charter
 - Thesis follow up

- Organize the trainings of the PhD students
 - Academic trainings for scientific knowlege
 - Non Academic trainings for general skills

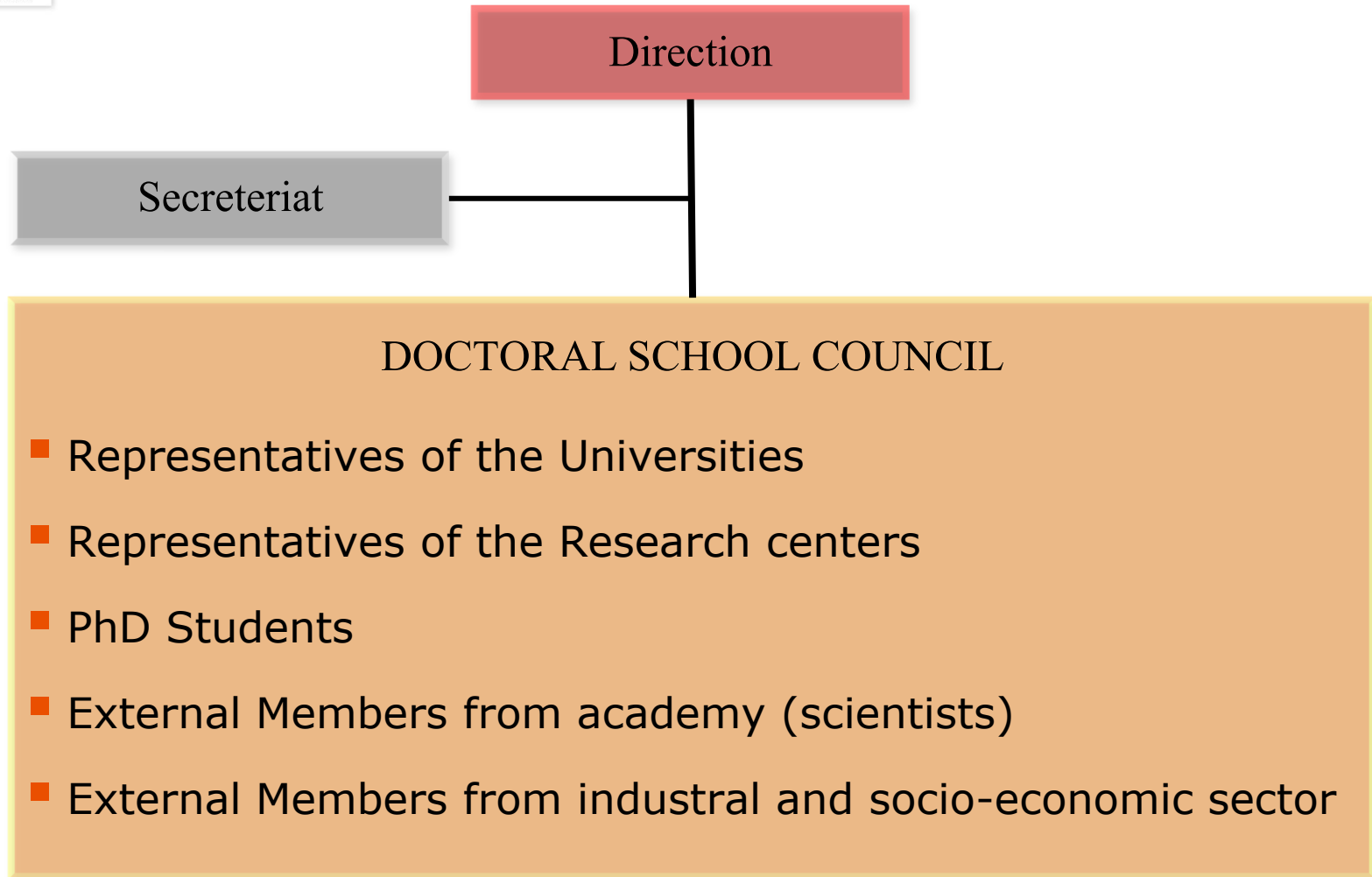
- Prepare their professional integration
 - Partnerships with agencies
 - Partnerships with companies

- Promotes and establish internationalization



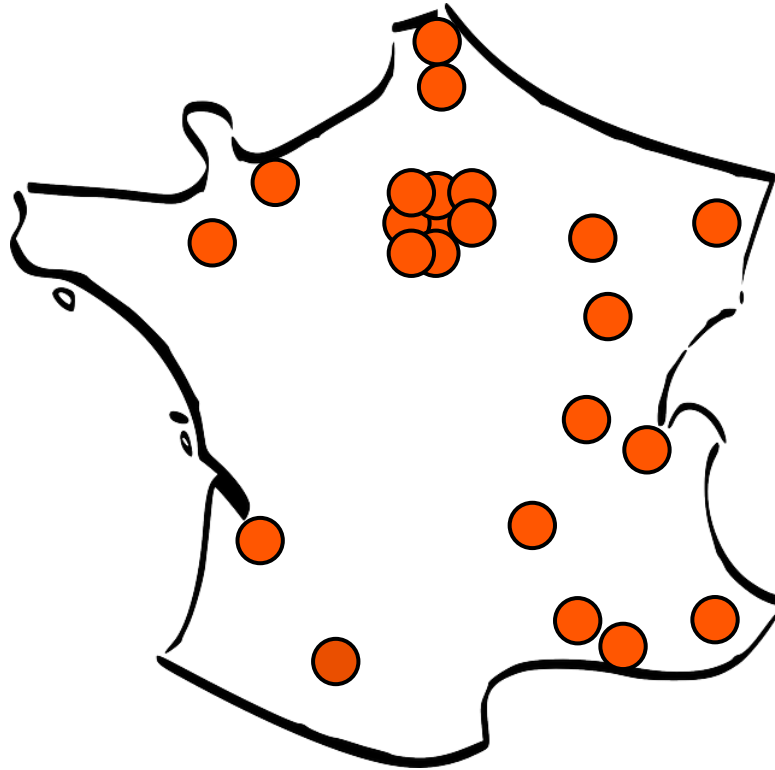


Organization of the Doctoral Schools





The french's COMUE

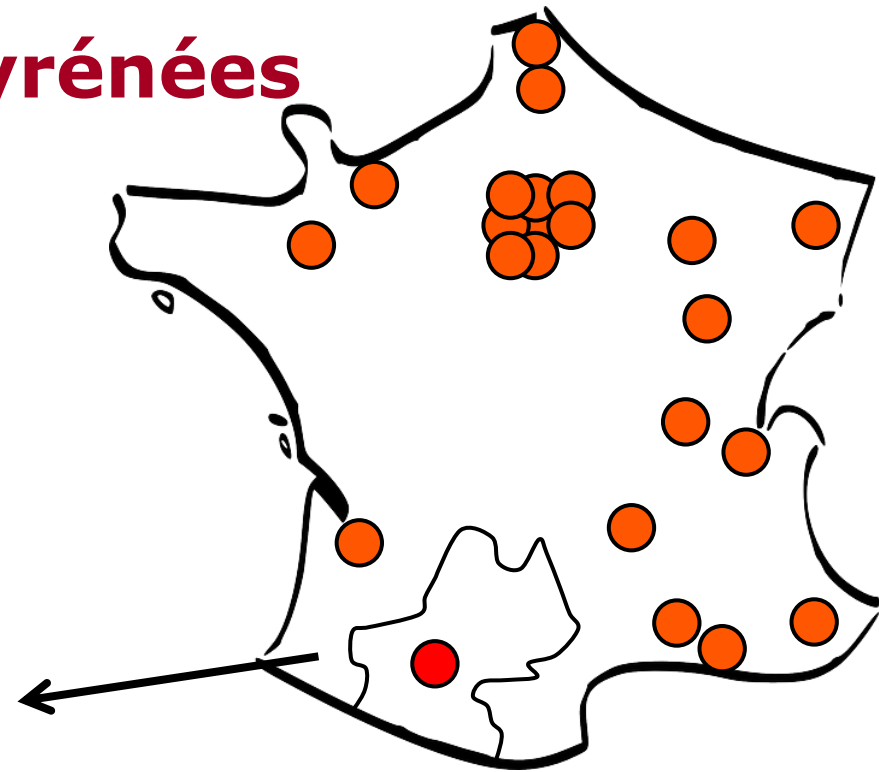
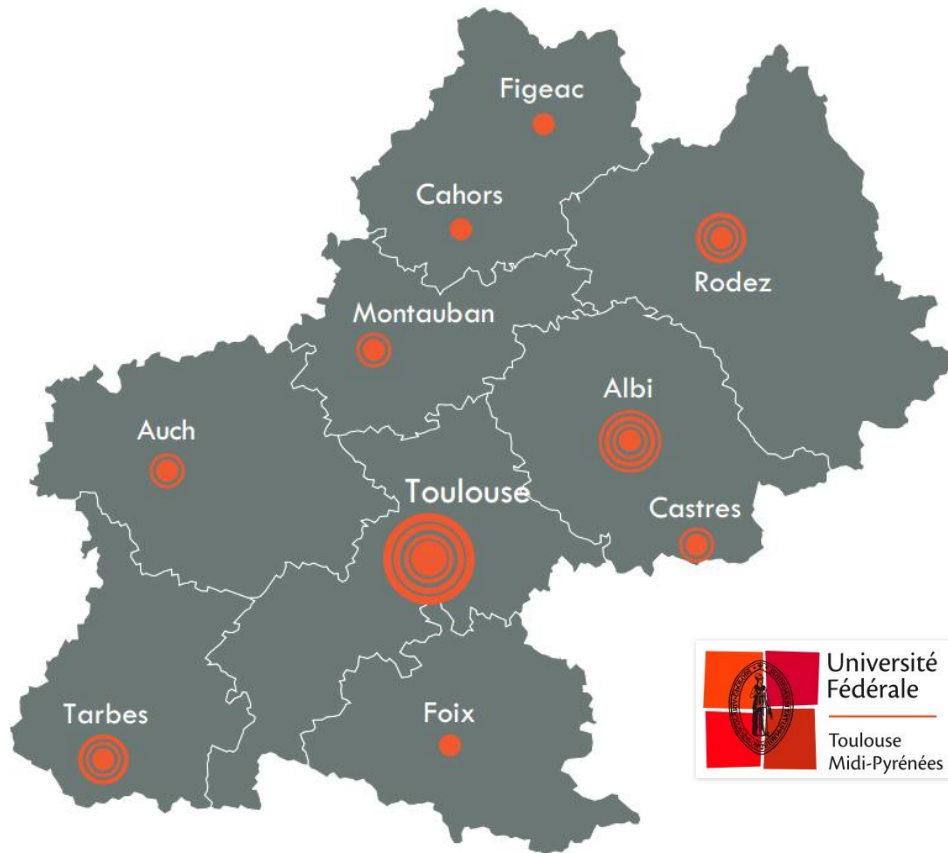


- 25 COMUE's (including Doctoral Colleges)
- One National network





Toulouse, Midi-Pyrénées



■ 3 millions inhabitants

■ Research

■ Industry

■ Higher Education

■ Midi-Pyrénées region, an European *think-tank*





The COMUE University of Toulouse



Université
Fédérale

Toulouse
Midi-Pyrénées

14 higher education and
research institutions:



7 National research institutions:



- 200 research centers
- 6,000 researchers
- 115,000 students



Cluster of competitiveness

Clusters of excellence in the research, industrial and training domains

Aerospace Valley
Aeronautics, Space and embedded systems



AGRIMIP-Innovation
Agriculture and food/non food-processing industries



Cancer-Bio-Health
**Health - Biotechnologies –
Oncological research**



Water
**Ecotechnology – Water research –
grenelle of the environment**





PhD Figures in Toulouse

4 500

• **PhD Students**

40%

• **International PhD Students**

850

• **PhD awarded / year**

8%

• **Of PhD degrees delivered in France**





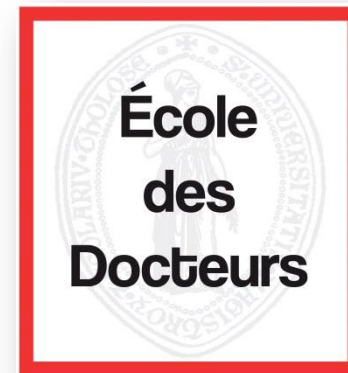
The Doctoral College

The École des Docteurs

- A dedicated project to promote the PhD studies (implemented in 2013)

through:

- A wide range of non-disciplinary trainings
- A career service to support Professional projects
- An international PhD office





Innovation in training process

- Body and space awareness
- Theatrical practices for teaching
- Improve its image and behavior for successful interviews
- Get prepared for an international career
- Introduction to business culture
- Foreign Languages and French Classes (FLE)





Relations with the socio-economic sector

- A web platform to develop the link between the universities and the companies
- A partner network with the companies to promote the PhD
- Project workshops focused on companies to increase networks between PhD students and companies





PhD Students from abroad in Toulouse



1,750 International PhD students (40%)





Internationalization of the PhD

■ International PhD Office:

- Platform of thesis proposals
- Funding of PhD students mobility
- Participation in international fairs
- Dedicated trainings and services in english for international PhD students (welcome PhD,...)





Actions of the International PhD Office

■ PhD students international mobility scholarships

- 120,000 € per year
- 75 PhD students granted in 2015



■ PhD students fairs

- Europosgrads, IGFSF, Campus France, NAFSA
- Chile, Colombia, Brazil, Mexico, China, Indonesia, USA



PhD joint supervision

- Agreement between 2 partner Universities
- The PhD candidate has 2 supervisors (one in Toulouse, the other one in the partner country)
- Agreement fixing the agenda of the mobility, the tuition fees, the place and language of the defense,...
- The 2 Universities issued their PhD grade, the thesis defense procedure having to satisfy the regulation of each





The graduated PhD

67%
work in France

33%
work overseas



79% of the Doctors consider the PhD as an asset





Thank you for your attention!

✉ helene.rouxdebalmann@univ-toulouse.fr

🖥 <http://en.univ-toulouse.fr>

